



Artist Peisy Ting

# Poetic *Calamity*

Peisy Ting visualises the collective state of the disturbed mind as she reimagines a brand new world amidst the ongoing pandemic.

Text by Izzat Haziq

Photos courtesy of Peisy Ting/ZHAN Art | Space

*Emotional Juxtaposition of Time & Space - Green (2020)*, Acrylic on canvas

As it is with most forms of art, a huge bulk of it is derived from inspiration, drawn from events close to the artists' inner and outer self. There is an immeasurable sense of solace that we find within art, as it is arguably the most tangible form of our feelings and emotions - a universal language that sends across a message for when words aren't enough.

This is one notion that Malaysian artist, Peisy Ting is bringing forth with "Transcendence - A Visual Exploration of Self", happening from 3 August to 27 September 2020. The recent unprecedented events that have transpired worldwide was the cue for the self-taught artist to explore the boundaries

of introspection and emotion in its most raw state, providing viewers with a kaleidoscopic journey that encompasses all spectrums of the human psyche.

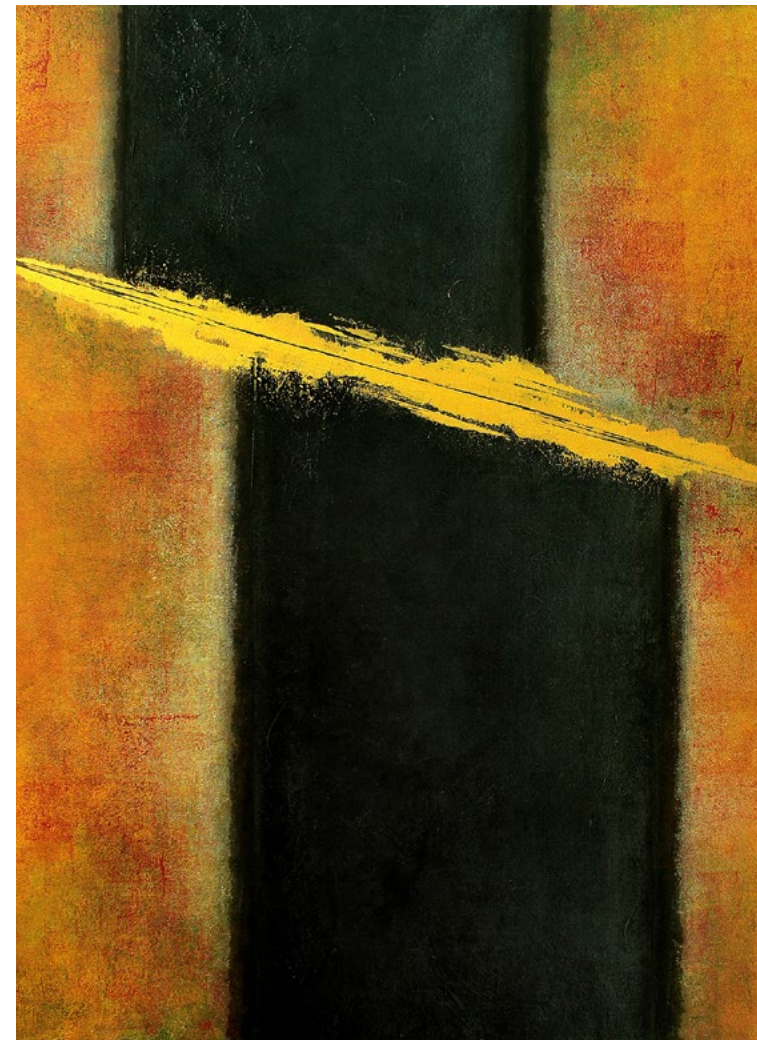
Peisy's *Emotional Juxtaposition of Time & Space* comprises three separate pieces; Blue, Green and Red. The trio of artwork unloads the indefinite anxieties and fears that stem from the pandemic outbreak. It invites viewers to dive headfirst into the agonising truth of being denied of living a care-free life as we retreat into isolation within the confines of our own spaces. Understandably, this has spawned feelings of unrest and anger. However, we are also presented an opportunity to look into our inner psyche, thus laying the perfect foundation for introspection that we often take for granted.



ZHAN Art Space Gallery



*Piercing Solitude* (2019), Acrylic on canvas



*Separation Consciousness* (2018), Acrylic on canvas

*“Our actions - or inaction - during these trying times affect the community as a whole.”*



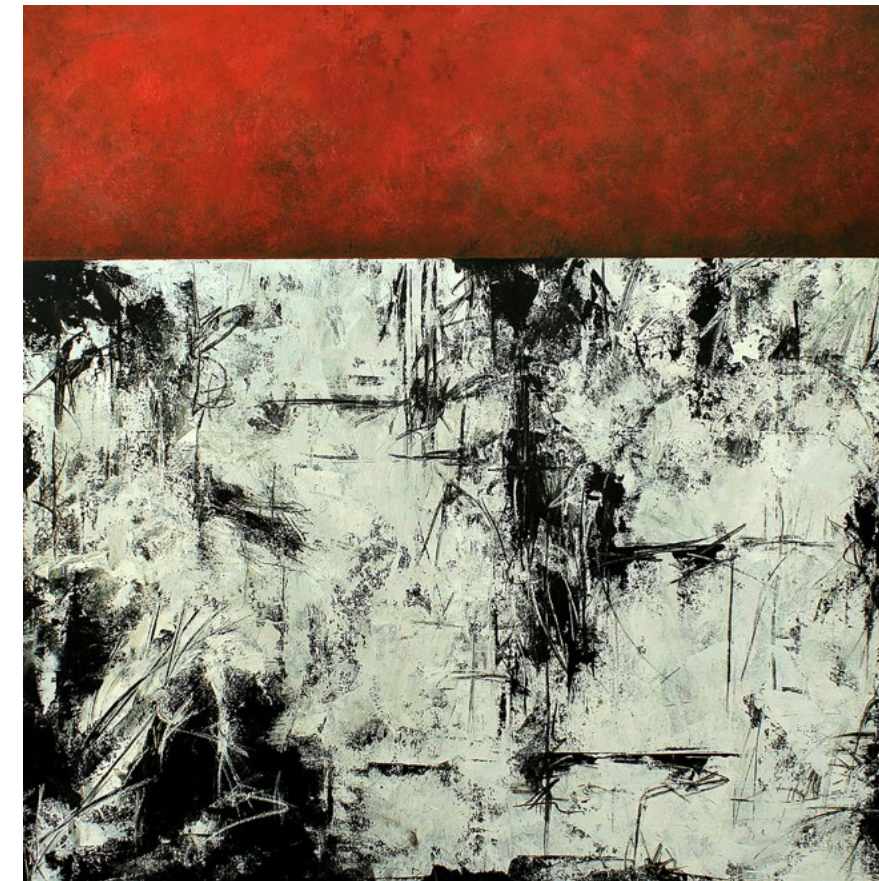
*Piercing Solitude* (2019), Acrylic on canvas

Meanwhile, Ting’s earlier artwork *Piercing Solitude* strips viewers of their guard and reveals the shared vulnerability towards cold loneliness. It is the visual representation of a human’s instinct to retreat when faced with an unseen adversary. Then, there is the bright stroke which pierces the dark orb symbolising optimism, akin to a bolt of light that compels us to stride forward amidst the general unrest. Although this piece was created in 2019, the timing couldn’t have been more perfect for it to be exhibited now, as the artwork perfectly mirrors our attempt to detach from the untimely disorder of the surroundings.

Another earlier artwork, Ting’s *Separation Consciousness* posits the notion of being at a crossroads, in which the decision that one makes will inadvertently impact themselves and others as well. It begs viewers to question what they stand for and how the decision that they make will ultimately have a ripple effect on those around them. The protruding yellow line implies two separate streams of consciousness, no longer in a union. This circles back to how our actions (or inaction) during these trying times would affect the community as a whole - whether it’s disruptive or otherwise.

### Arresting Visuals

In its entirety, “Transcendence – A Visual Exploration of Self” is a collection of 24 paintings that serves as a cautionary tale against complacency, beckoning its viewers to confront the unsettling and often uncomfortable truth in life. Her ingenuity permeates through the canvas, as her daring choices in commissioning dark colours to her painting evokes myriad emotions that viewers simply can’t brush aside.



*Emotional Juxtaposition of Time & Space - Red* (2020), acrylic on canvas

The art director turned painter is opening her first solo exhibition in Malaysia at ZHAN Art | Space, The School, Jaya One. Curating art works by more than 50 artists since its inception, ZHAN Art | Space is active in the role of providing a platform for both budding and well-established artists to gain exposure as well as to showcase their talents.



*Emotional Juxtaposition of Time & Space - Blue* (2020), Acrylic on canvas.